

Look Inside Your Meat Processes

Data Collection and Visualization

A graphical representation of Key Performance Indicators (KPIs) for your meat production enables you to optimize production and make informed business decisions. Collect+ data collection and visualization software provides the right view for every user.

Accurate production data is essential to maintaining an efficient process and controlling quality. It is the basis for informed business decisions.

In meat, poultry or ready meals production, relevant key figures could include weighing parameters from scales, temperature values from a cold storage room or fill quantities from a process tank. Collecting data in an efficient way is not always easy.

However, receiving goods can be controlled over a single scale with an attached barcode scanner or with a truck-scale weighing procedure. Other relevant data may come from laboratory equipment, such as pH sensors, manual checkweighers, filling terminals or a PT100 temperature sensor.

We have developed collection and visualization software that summarizes all those relevant KPIs in an easy-to-use dashboard.

This paper provides you some insight on how the software works and shares examples for production, quality and maintenance managers about how to use that data to improve daily work.



Contents

-
- 1 Data handling and connectivity
 - 2 Easy integration into IT systems
 - 3 Select your dashboard
-

1 Data Handling and Connectivity

Connect

With Collect+, your weighing data, temperature or pH results are connected to a central data-collection system. It is designed to support process optimization, regardless of the brand of equipment. Your live measurement data is then stored in real-time for analysis and archiving.

On the Go

All software functions are accessible from your web browser. Use the software for real-time information on your tablet, mobile phone or PC.

Export

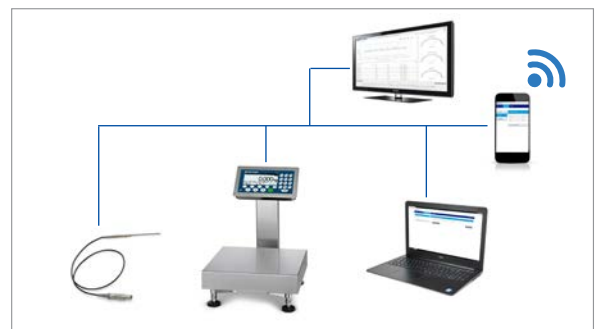
All data can easily be exported into another tool, such as Microsoft Excel. Use the filter function to select the measurements you want to export.

2 Easy integration into existing IT systems

The software installation on a PC takes only few minutes. Adding data from a scale requires you to perform the following steps:

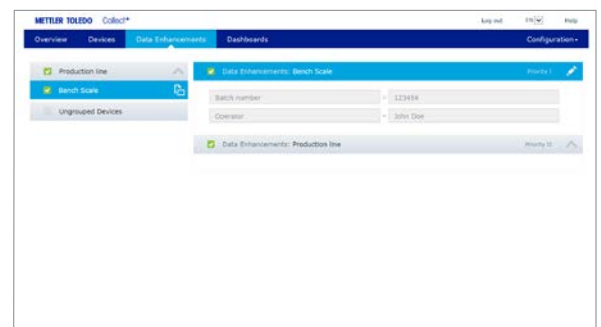
1. Define devices

Production devices can be connected to the central PC via RS232 serial connections over Ethernet TCP/IP. Nearly any device can be connected and millions of measurements can be stored to the data-collection engine.



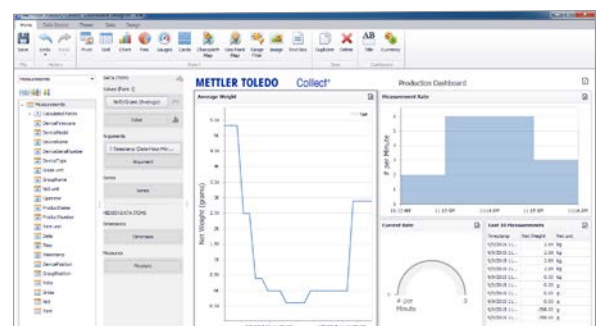
2. Add further information

Data enhancements can be added to measurement data. For example, an operator identification number or product description can be added manually, when this information is not provided by the device.



3. Define dashboard

The flexible built-in dashboard editor allows you to tailor your views exactly to what you want to see. Create multiple views for different production areas or different roles. Choose to work with charts, gauges or simply with a grid.



3 Select your dashboard

All views can easily be customized and stored as a single dashboard.

View of a quality manager

Someone in this role might set up their dashboard to see:

- Out-of-specification data from scales
- Trend information
- Deviation values
- Actual temperature data from a cold storage room
- Actual quality data of incoming goods (pH, temperature etc.)
- Performance verification – calibration status & results



View of a production manager

Someone in this role might set up their dashboard to see:

- Overall equipment effectiveness of the scales
- Average net weight by production line
- Amount of produced products by line and product
- Throughput and portion accuracy by operator



View of a maintenance manager

- Immediate overview on equipment performance
- Performance status of tank-weighing load cells
- Filing status of each tank



Collect+™ data collection and visualization software brings a new perspective to your processes by graphically representing process trends and enabling you to make informed business decisions.

www.mt.com/CollectPlus

For more information

Mettler-Toledo GmbH
Industrial Division
CH-8606 Nänikon, Switzerland

Local contact: www.mt.com/contacts

Subject to technical changes
© 12/2015 Mettler-Toledo GmbH
MTSI 30259706